

Theatre Address

1001 Calahoo Road
Spruce Grove, AB Canada



Contacts

Box Office: (780) 962-8995

Facility Rental: (780) 962-7579

Technical Contact: (780) 962-4404

Website

www.horizonstage.com

E-Mail

horizonstage@sprucegrove.org

Seating Capacity

318 fixed seats

Unions

No union affiliations

STAGE DIMENSIONS

Proscenium

Maximum width	46'	(14M)
Practical trim	38' 6"	(11.7M)
Fixed height	15' 6"	(4.7M)
Main curtain line to cyc	16' 6"	
Main curtain line to audience	24'	

Thrust Opening

Maximum width between legs	32'	
Maximum width downstage	14'	(4.3M)
Stage floor to grid	20' 0"	(6.1M)
Cyclorama to wall behind stage	4' 0"	(1.2M)

Stage Floor

Stage floor is covered in marmoleum
Floor color is black throughout
No traps available
Floor is sprung

FLY INFORMATION

The theatre is not equipped to fly anything



STAGE DRAPES

Valance (Main House Border)

66' 0" W x 13' 0" H

(21M X 4M)

Blue Velour, unlined

Fixed Trim: 15' 6"

(4.7M)

Main Curtain

55' 9" W x 20' 0" H

(17M X 6.1M)

Blue Velour, unlined

Electrically powered traveler

Operated from control booth or stage right

Maximum speed in/out: 20 Seconds

Legs

8' 0" W x 19' 6" H

(2.3M X 6.1M)

3 pairs

Black in colour

All legs are fixed, but may be relocated with sufficient notice

Middle pair of legs are a midstage traveler, hand drawn from stage right

Borders

46' 9" W x 4' 0" H

(14M X 2M)

3 masking borders

Black in colour

Upstage Traveller

34' 6" W x 19' 6" H

(10.5M X 5.9M)

Black velour, unlined

2 panels hand drawn from stage right

Cyclorama

White, fixed upstage

Scrim

The theatre is not equipped with any scrim

Movie Screen

18' 0" W x 10' 0" H

Located directly behind and above the main curtain

Electrically operated from control booth or stage right

Auxiliary Screens

2 @ 105" x 59" viewable area tension framed front projection screens

Located above each audience entrance

STAGING EQUIPMENT

Music Stands

8 black stands available upon request

Pianos

A440 (Tuning available upon request for a fee)

1 Kawai upright

1 Baldwin 7' grand piano

Genie Lift

1 AWP-25S

Lectern

1 available upon request

Chairs & Tables

Available upon request, with advance notice

Risers

4' x 8' Risers: 15 Risers adjustable to the following heights
15 Risers @ 8" 8 Risers @ 16" 8 Risers @ 24" 15 Risers @ 32"

Folding Choir Risers

6' 8" L x 1' 6" W Folded

18" Tread with 8" rise

Trapezoid shape, 6' across back and 4' 5 1/2" across front

3 step Choir Risers

5 units available

In semi-circle formation can accommodate 9 per unit.

LOADING DOCK STAGE RIGHT

Located at NW corner of stage

Distance from stage: 24' 0"

(7.3M)

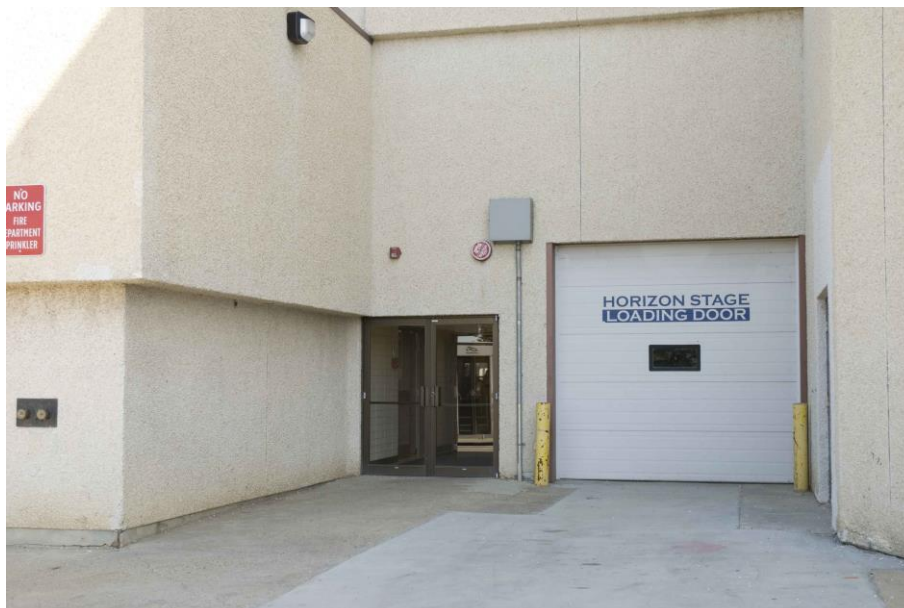
Loading door is at stage level

Door Dimensions: 9' 10" W x 9' 0" H

(3M X 3M)

No vehicles are permitted to remain in the loading dock during a show

Door is a manual roll up garage style door



DRESSING ROOMS & BACKSTAGE FACILITIES

Men's Dressing Room

Located stage right at stage level

13' 9" W x 23' 0" L

(4.2M X 7M)

Seats 12 performers comfortably

Equipped with 2 washrooms, no shower facilities

Women's Dressing Room

Located stage left at stage level

13' 9" W x 25' 3" L

(4.2M X 7.7M)

Seats 14 performers comfortably

Equipped with 2 washrooms, no shower facilities



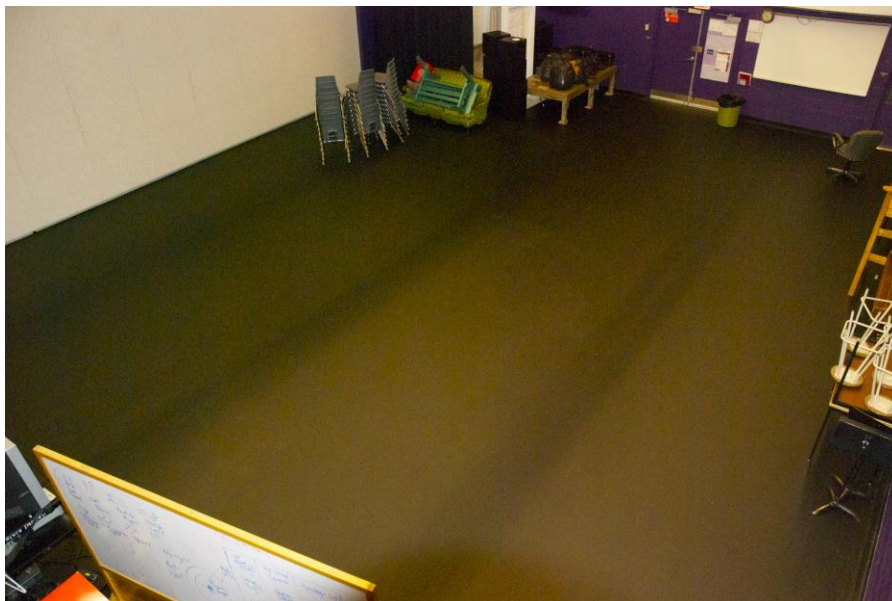
Green Room

Located behind the stage and between the dressing rooms

Used by high school as a drama room year round

Available upon request only

Functions as a crossover



LIGHTING EQUIPMENT

The following equipment is permanently located and cannot be removed

Note: This equipment is part of the permanent "House Plot"

Front of House

FOH 1	6	575 Watt ETC 25° - 50° Zoom Source 4 Junior
	8	750 Watt ETC 25° - 50° Source 4 Zoom
	3	ETC 25° - 45° PARNel w/ Chroma Q 16 frame gel scroller
	2	ETC Colorsource PAR Deep Blue w/Medium (45°) Diffuser and Half Top Hat
	1	ETC Colorsource PAR Deep Blue w/Medium (45°) Diffuser
	2	ETC Colorsource PAR Deep Blue w/Narrow Oval Diffuser
	2	Martin Mac 700 Profile (Hung below the catwalk)
FOH 2	8	750 Watt ETC 25° - 50° Source 4 Zoom
	2	ETC 25° - 45° PARNel w/ Chroma Q 16 frame gel scroller
	2	ETC Colorsource PAR Deep Blue w/Medium (45°) Diffuser and Half Top Hat
	2	Martin Mac 700 Profile (Hung below the catwalk)
FOH 3	6	750 Watt ETC 25° - 50° Source 4 Zoom
FOH 4	4	750 Watt ETC 25° - 50° Source 4 Zoom
	2	155 Watt (Source 4WRD LED) ETC 19° Source 4 w/ Rosco iCue moving mirrors & City Theatrical Iris

On Stage

LX 1	4	575 Watt ETC 25° - 50° Zoom Source 4 Junior
	4	ETC 25° - 45° PARNel w/ Chroma Q 16 frame gel scroller
	4	ETC Colorsource PAR Deep Blue w/Medium (45°) Diffuser
	2	ETC Colorsource PAR Deep Blue w/Narrow Oval Diffuser
	2	Martin Mac 700 Profile
LX 2	4	575 Watt ETC 25° - 50° Zoom Source 4 Junior
	4	ETC 25° - 45° PARNel w/ Chroma Q 16 frame gel scroller
	4	ETC Colorsource PAR Deep Blue w/Medium (45°) Diffuser
	2	ETC Colorsource PAR Deep Blue w/Narrow Oval Diffuser
	2	Martin Mac 700 Profile
Cyc LX	5	Chroma-Q Color Force 72 (Hung upstage of the cyc)

Stock Hang

The following equipment is semi-permanent but may be relocated

If the hang is altered, it must be restored to the "House Hang" at the expense of the lessee.

FOH 1	2	575 Watt ETC 25° - 50° Zoom Source 4
FOH 2	2	147 Watt ETC 26° ETC ColorSource Spot
FOH 3	2	147 Watt ETC 36° ETC ColorSource Spot
	2	147 Watt ETC 26° ETC ColorSource Spot
	4	575 Watt ETC 25° - 50° Zoom Source 4 Junior
LX 1	5	575 Watt ETC 25° - 50° Zoom Source 4 Junior
LX 2	1	575 Watt ETC 25° - 50° Zoom Source 4 Junior
LX 3	4	575 Watt ETC 25° - 50° Zoom Source 4 Junior
	4	ETC Colorsource PAR Deep Blue
Other	4	750 Watt ETC 10° Source 4 (Hung outside booth, near FOH 4)
	5	Chroma-Q Color Force 72 (Used for ground row, upstage of the cyc)

LIGHTING EQUIPMENT CONTINUED

The following equipment may be located at the licensee's option
Quantities may vary; please confirm before your event
Additional expenses may apply

Hazer

- 1 Antari X-310D Fazer

Lekos

- 2 750 Watt ETC 15° - 30° Source 4 Zoom
- 7 750 Watt ETC 25° - 50° Source 4 Zoom
- 6 575 Watt ETC 25° - 50° Zoom Source 4 Junior
- 2 750 Watt ETC 5° Source 4
- 2 ETC 5° Source 4 Lens Barrel

Fresnels

- 16 ETC 25° - 45° PARNel
- 2 ETC Colorsources PAR Deep Blue

Mirror Ball

- 1 20" Mirror Ball
- 1 ADJ MB DMX II Heavy Duty rotating motor

Color Blasts

- 1 PDS750 Power supply unit for up to 12 Color Blasts
- 8 Chroma Q Color Blast 12 TR

Iris

- 13 drop in iris for ETC Source 4 Lekos
- 2 drop in iris for ETC Source 4 Jr. Lekos

Music Stand Lights

Limited number available upon request

Gobo Rotator

- 1 Apollo Smart Move DMX Rotator

Projector

- 1 Hitachi CP-WU8460 (Located beneath FOH 2)
- 2 NEC NP-P502WL-2 Laser projectors (Located beneath FOH 1)

Follow Spots

- 2 Altman Comet

MISCELLANEOUS LIGHTING INFORMATION

Circuits and Control

Dimmer per circuit

Please see stage lighting stock hang drawings for circuit numbers and locations

All are 2.4 KW circuits and are 3 wire #L5-20 20 amp/125 volt twist-lock connectors

Except for the following, all circuits are located on second level catwalk and cabled onto LX pipes:

6 Circuits located on rear wall, at either side of the stage

2 Circuits located in FOH audio mix position

Dimmers

192 ETC Sensor Dimmers 2.4 KW

Console

ETC Eos with attached 2 x 20 fader wing, permanently located in control booth

ETC Nomad Puck backup system

Road Power Availability

100 amps, 3 phase, 4 wire located in stage right loading dock

SOUND SYSTEM AND COMMUNICATIONS

FOH Mix Position

There is a House Audio Booth located at the rear of the house

Console: Yamaha M7CL 48 channel console

Outboard Rack: 1 Tascam CD-500
1 Tascam CD-RW 901SL

Booth Mix Position

Console: Yamaha LS9-16

Outboard Rack: 1 Tascam CD-450
2 Radial JPC MK3 Stereo DI

Speaker System

Left & Right Cluster: 2 Meyer UPJ-1P

Center Cluster: 3 Meyer UPJ-1P
2 Meyer USW-1P Subs

Front Fill 2 Meyer UP1 on sticks (available upon request, with sufficient notice)

Monitor System

Console: No monitor console available

Power Amps: 4 QSC 1500

Wedges: 8 EAW SM200ih

Microphones

Shure 5 SM57
10 SM58
1 Beta 57A
4 Beta 58A
1 PGDMK6 Drum Mic Kit

Electra-Voice 2 RE-10
2 635A
2 ND 408
2 ND 257

Sennheiser 2 421

AKG 4 535
1 D112
2 C519

Audio Technica 2 AT2035

2 C-Ducer C tape

DIs

Rapco	4 db 100
	4 db-1
	2 LTI 100
LA Audio	4 D12

Wireless

Shure	4 Four Channel ULXD4Q receivers
	5 ULXD2 Beta 58 handheld transmitters
	16 ULX-D1 bodypack transmitters
	16 Apex 575 Headset condenser microphone
	2 WL51 Lavalier microphone
	1 AKG C 420 Head-worn microphone
	2 Countryman E6i Omnidirectional earset microphone

Shure Wireless Microphone Frequencies

Please contact technicians for information.

Intercom

Clear-Com wired system to all key production locations
Clear-Com Tempest 2400 wireless communication system with 4 units

Program Sound

Program sound to dressing rooms, green room and lobby
Available upon request

Assisted Hearing

Sennheiser SI 1015 Infrared Unit
10 RI 150 mono headsets

Snakes

2 50' 8 channel
1 75' 8 channel

Stands

25 Assorted tall boom tripod mic stands
7 Assorted short boom tripod mic stands

Miscellaneous

Audio patch box is located on the stage right wall and contains 48 channels and 9 returns



MISCELLANEOUS

Notes:

- Contact the Culture Facility Operations Supervisor for updates of equipment (new acquisitions, under repair, etc.)
- Rental equipment can be arranged with reasonable notice
- Scale drawings are available upon request
- Front of house staff available upon request. Staff supplied by the Horizon Stagelights
- Licensed bar in lobby
- Theatre and Lounge area smoke free

Usual Performance Times:

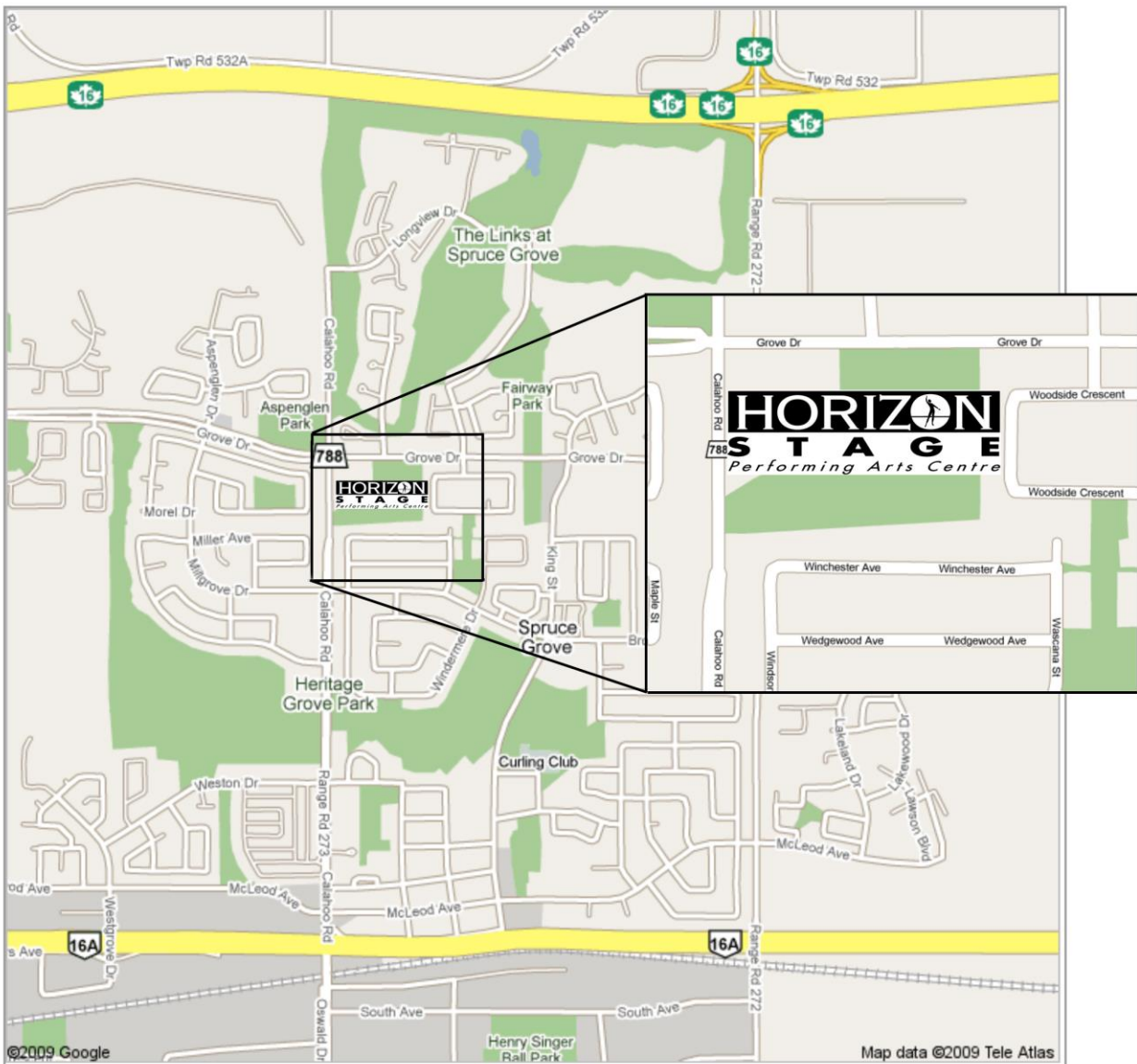
Evening - 7:30 pm Matinee - 2:00 pm Schools - 10:00 am/1:00 pm

Travel Information

Edmonton International Airport (YEG) is 45 minutes away

Address

Attached to Spruce Grove Composite High School
1001 Calahoo Road
Spruce Grove, AB Canada



CONTACT SHEET

Mailing Address

Horizon Stage
c/o City of Spruce Grove
315 Jespersen Avenue
Spruce Grove, AB
T7X 3E8

Administration and Ticket Office

Located in Border Paving Athletic Centre
#100, 9 Tri Leisure Way
Spruce Grove, AB
Canada

Recreation & Culture Program & Event Supervisor

Jeanine Merkus (780) 962-7634 (ext 157) jmerkus@sprucegrove.org

Culture Facility Operations Supervisor

Don Waddle (780) 962-4404 dwaddle@sprucegrove.org
C: (780) 887-6058

Event and Equipment Technician

Morris McClelland (780) 962-4404 mmcclelland@sprucegrove.org
C: (780) 991-7976

Facility Bookings Specialist – Recreation & Culture Services

Sarah Long (780) 962-7579 slong@sprucegrove.org

Senior Administrative Assistant – Recreation & Culture Services

Karen Smutt (780) 962-7631 ksmutt@sprucegrove.org